

- This product is intended to persons aged 21 and older. It is not suitable for children, pregnant, lactating women, and persons in general ill health.
- Seek medical help if an adverse physical reaction occurs during use.

How to store the Atomizer:

Keep out of reach of children.

How to dispose of the Atomizer:

Please dispose of used atomizer in a safe and environmentally responsible way. Since the atomizer contains small parts, please keep away from children and pets. If oil comes in contact with eyes or skin, wash immediately.

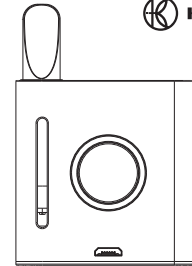


Use the QR code to be directed to our social media, website and product catalog



<https://www.thekushcart.com>

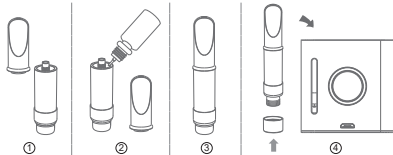
KC-B510/V01 User Manual



The Device is intended for adults aged 21 and over. This product is not recommended for persons under the age of 21, pregnant or lactating women, or those experiencing any ill health.

For the best possible vaping experience, please read this leaflet carefully before you start using this product.

Instructions for Use:



1. Screw off the mouthpiece.
2. Carefully inject oil along the inside wall of tube.
3. Screw the mouthpiece back tightly within 20 seconds (Suggestion: keep the cartridge upside down for at least 12 hours after this step to avoid leakage).
4. Screw the magnetic connector onto the cartridge, and insert the cartridge into the Device to vape.

Atomizer Installation Instruction

1. Screw the magnetic connector onto the atomizer.
2. Insert the atomizer into the KC-B510/P01.
3. Press the button to vape.

Keystroke Description:

1. Power on/off: Press the button 5 times quickly in 2 seconds, Device will power on or off. LEDs will be on 1.5 seconds when powered on, and flash once when powered off.
2. Smart preheating function: Press the button twice quickly, Device will enter preheating mode, the LEDs will flash red color slowly for 15 seconds unless pressing the button to stop.
3. Adjust voltage levels: Press the button 3 times quickly to adjust, the LEDs will flash different colors at the same time.
(4.0V: red, 3.2V: yellow, 2.6V: green)
4. Overtime indication: After vaping longer than 10 seconds, the LEDs will flash 6 times and Device will stop outputting until pressing to vape again.
5. Low battery indication: The LEDs light will indicate red and flash 5 times.
6. Charging indication: The LEDs light will indicate corresponding power. The LEDs will be fully green when fully charged. (>70% power: green, 30%-70% power: yellow, >30% power: red)

<https://www.thekushcart.com>

7. No-load indication: When no-load, the LEDs will flash 3 times and there will be no output.(4.0V: red, 3.2V: yellow, 2.6V: green)
8. No power indication: The LEDs will flash 8 times quickly and there will be no response.
9. Charging port: Device only supports Micro USB charging cable.
10. Protection functions:
 - * Short circuit protection: The LEDs will flash 3 times quickly when the atomizer is detected short circuit.
 - * Overheat protection: The LEDs will flash 10 times when the PCBA is detected overheat.
 - * Over-charge protection: Device will stop charging when fully charged.
11. Range of atomizer resistance: 1-3.0 ohm.
12. Warm suggestion: Device is not full of power when leaving factory. It's better to be charged fully before using.

Reminders:

1. Long single draws will cause overheat. Please use at appropriate intervals.
2. Please charge the Device when the power is low causing low vapor or no vapor.
3. Please keep the magnetic connector in a safe storage place. Losing the adaptor will result in loss of atomizer functionality.

Warnings and Precautions:

- Please ensure that this product is far away from children and pets.