

PEAK PERFORMANCE HIGHLY ELEVATED



**KUSHCART**

---

**Vape Hardware Solutions Dialed To THC/CBD  
Extracts For An Optimum User Experience**

---

## ABOUT KUSHCART

Kush Cart has brought innovation to vape hardware since introducing the ceramic atomizer from the medical space in 2014 and continues to focus on design innovation by pairing IT solutions with vape hardware performance.

We offer direct manufacturer pricing and quality control with stateside support for a smooth customer experience to meet your needs.

Kush Cart has focused two years of research and development with extraction professionals to develop atomization based on your oil's chemistry.

We offer fully OEM/ODM manufacturing and engineering capabilities to design custom branded vape hardware and protect your IP.





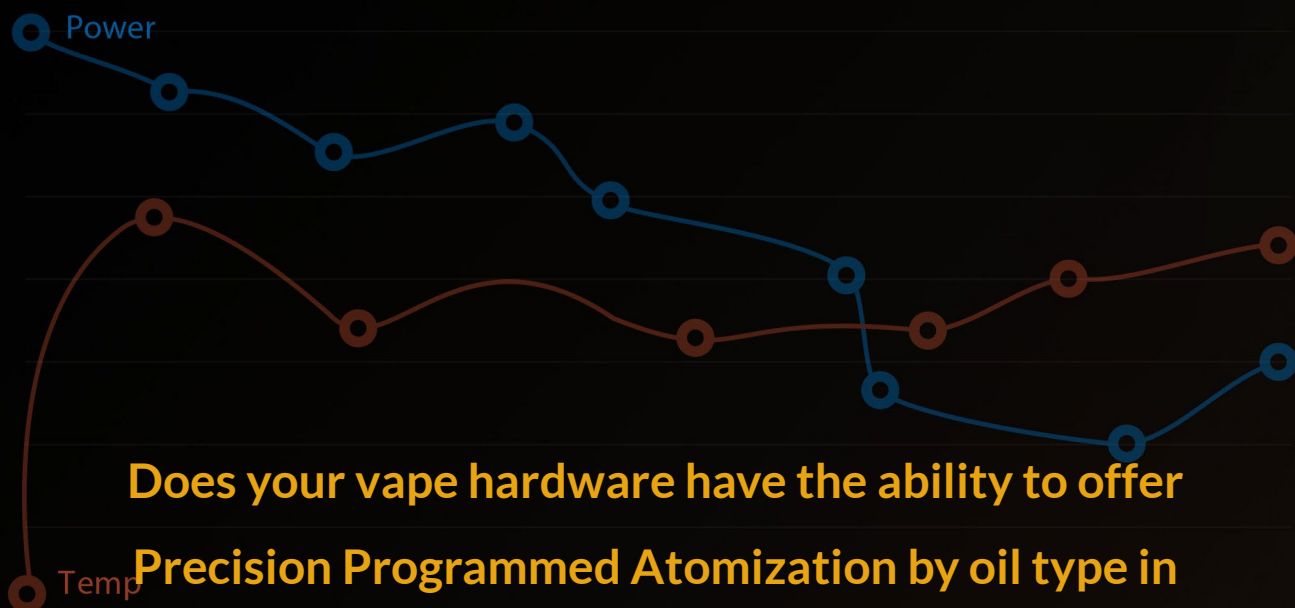


## Smart Device

EmPower Your Oil & Brand to be  
the **Best.**

Customized Device Settings for the BEST Oil  
Performance with Device Counterfeit Authentication.





**Does your vape hardware have the ability to offer Precision Programmed Atomization by oil type in order to preserve terpenes and limit oxidation?**

Our IT solution applied to vape hardware allows us to program variable wattage per second to gently ramp temperatures up and down to atomize, not burn your oil for a low temp experience while preserving terpenes so the first rip matches the last.

This allows your branded vape hardware to be programmed for specific oil types to lock in the best user experience for your customers. Our proprietary chipset also allows for true device authentication and counterfeit protection from manufacturer to retail.

We would love the opportunity to send you samples and let the experience speak for itself.

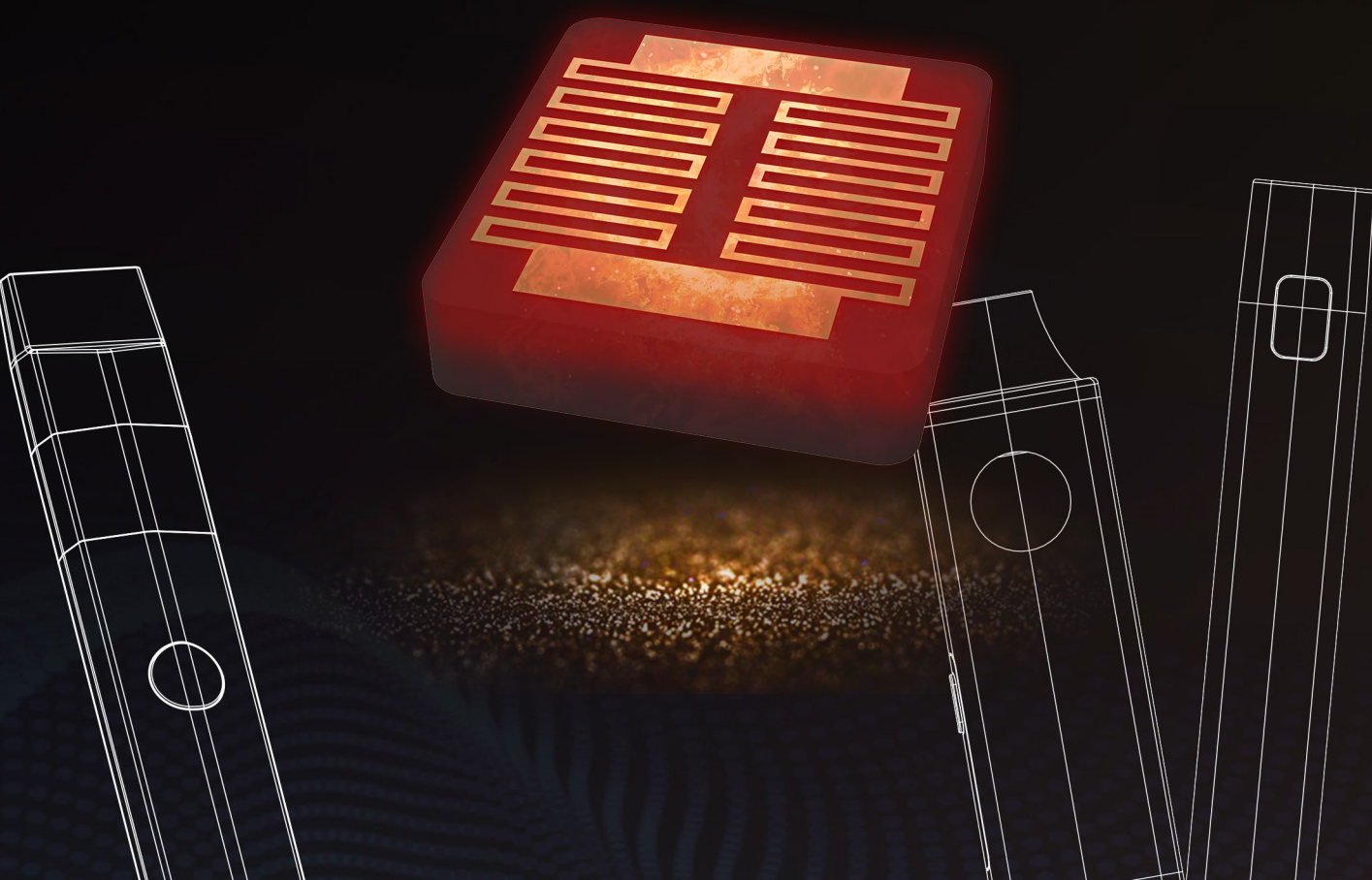






# Dual Mesh Ceramic Core

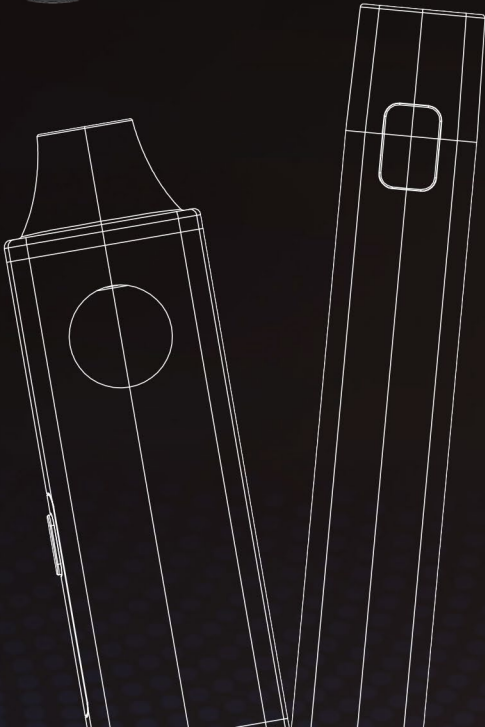
Match for distillate, Liquid Diamond, Live resin & Rosin Oils

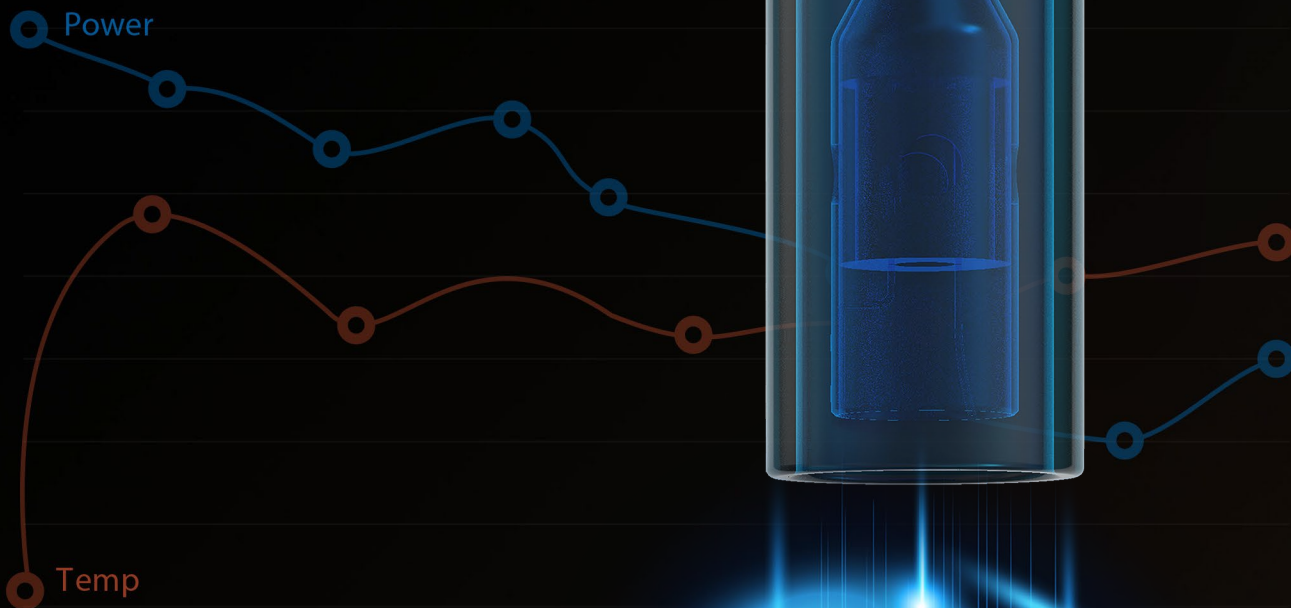


# Customize special atomization curve for your extract with Nutun™ technology and embedded microchip.

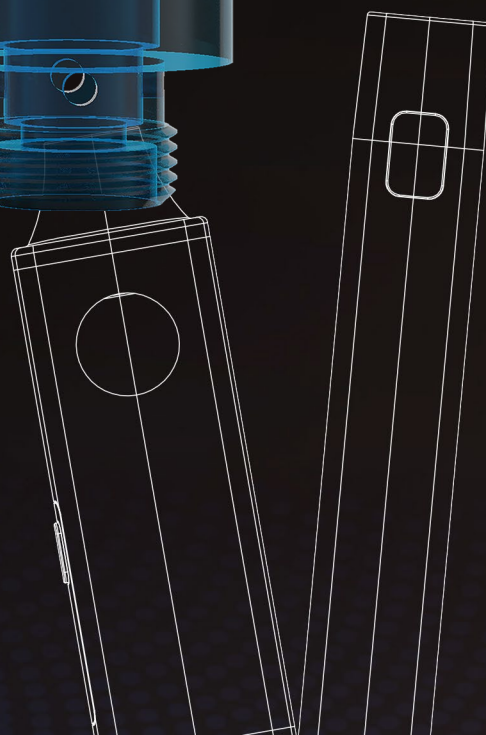
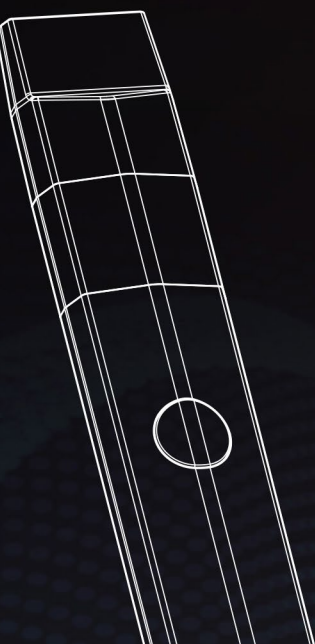
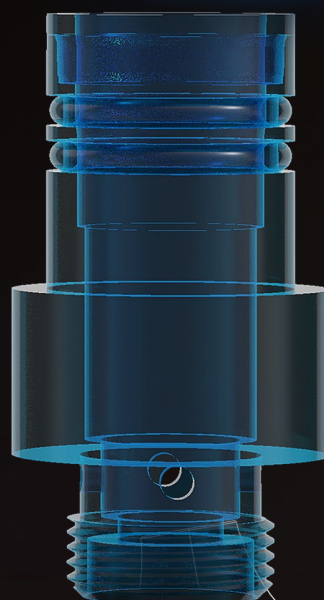
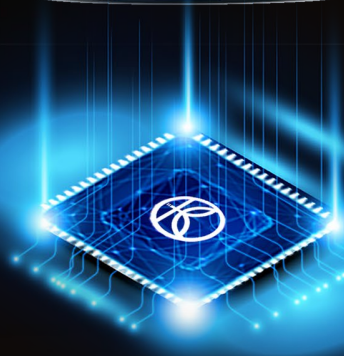
Once the max wattage curve setting is finished, the cartridge must vaporize your oil at a temp below that curve, regardless of battery voltage, guaranteeing consistent quality and no burn smell.

Limited Max Wattage  
Cartridge Draw from Battery

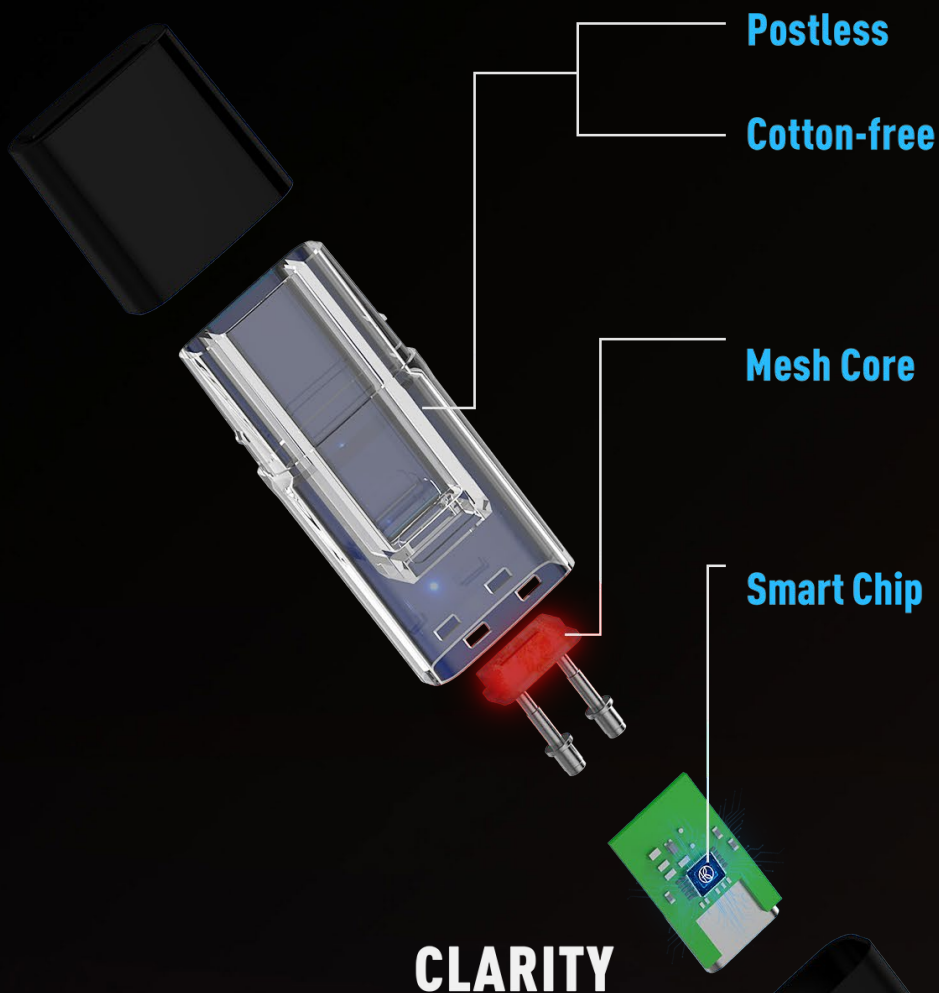




**Embedded Microchip  
Governor for Max Control  
and Best Flavor**







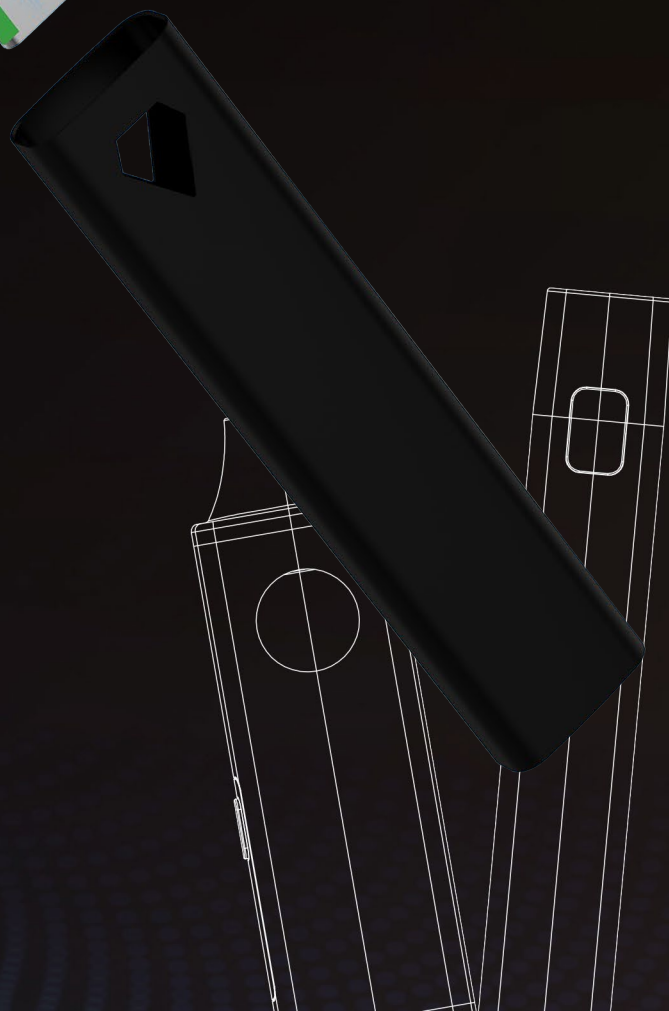
# CLARITY

SMART POST LESS

Designed for Viscosities Extractions

**Smart Device**

Customized Device Settings for the BEST Oil  
Performance with Device Counterfeit Authentication.





# TACK

## 1ml Ceramic Coil

### KC-C08I/P10

## Cartridge

### Press-on

### Smart Device

Customized Device Settings for the  
BEST Oil Performance with Device  
Counterfeit Authentication.

- Volume 0.5ml/1.0ml
- Resistance 1.4ohm
- Aperture Size 1.6mm
- Material: Center Post-SS316L
- Mouthpiece-ceramic
- Oil Tank-Glass
- Thread: 510



# Duet

## Atomizer AIO Box 1.0ml

### KC-D13I/10

#### Smart Device

Customized Device Settings for the BEST Oil  
Performance with Device Counterfeit Authentication.

- Inhaled Activated
- No Center Post
- Cotton Free Dual Coil Ceramic Core
- Dual Airflow Channels Design for No Clogging
- Rechargeable Battery
- Operation - Inhale to Use
- 3 press on the button to activate 15s preheating at 3W,
- 1 press to end preheat mode
- 1 press on the button to check the battery life
- Short Circuit Protection
- Overload Protection
- Timeout Protection
- LED indicator flashes red 10 times when the battery is too low, and there will be no response when the battery has completely run out.
- LED indicator pulses breathing in green when charging and stays on green when fully charged.





# NOVA

## 2.0ml Smart Vape



### Smart Device

Customized Device Settings for the BEST Oil  
Performance with Device Counterfeit Authentication.

- Inhaled Activated
- Ceramic Heating Core
- Compact Body
- SUS316L Center Post
- Pure Flavor, Large Clouds
- High Cost-Performance
- Rechargeable Battery
- Touch Sensor & Operation
- 4 taps to activate preheat mode
- 1 tap to end preheat mode
- Short Circuit Protection | Overload Protection | Timeout Protection | Accidental Touch Protection
- Battery Level Display
- Dimension: 69.5 x 27 x 13mm



NUTUN

# Dyno

## 6.0ml Smart Vape



### Smart Device

Customized Device Settings for the BEST Oil  
Performance with Device Counterfeit Authentication.

- Button Activated
- Dual Center Post
- Dual Ceramic Heating Core
- 6ml Large Capacity
- Pure Flavor, Thick Clouds
- Easy-to-Read LED Screen
- Adjustable AirFlow
- Button Operation
- 5 clicks on the button to turn on/off the device
- 2 clicks to activate preheat mode
- 1 click to end preheat mode
- Short Circuit Protection | Timeout Protection | Overload Protection | Over Current Protection | Overcharge Protection | Over-discharge Protection



# Acute

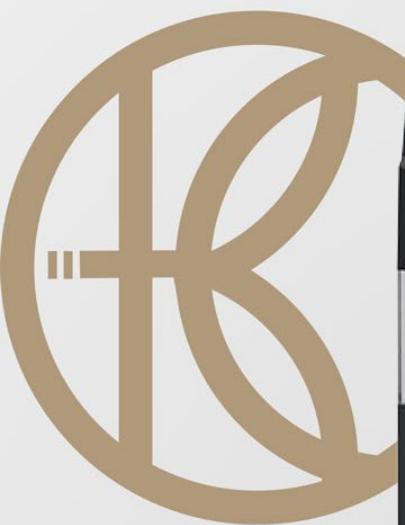
360° visible tank

## Smart Device

Customized Device Settings for the BEST Oil  
Performance with Device Counterfeit Authentication.

- Volume: 0.5ml 1.0ml 2.0ml
- Dimension: 19.5 x 10.6 x 105.6mm (0.5ml) 19.5 x 10.6 x 110.6mm (1.0 ml) 19.5 x 10.6 x 119.4mm (2.0 ml)
- Airflow : Bottom Airflow
- Filling Method: Top Fill
- Mouthpiece Material: pc Flat
- Resistance: 1.4Ω
- Heating Core Material: Ceramic
- Center Post: SUS316L
- Tank Material: PCTG
- Aperture Size: 1.6mm\*4 or 2.0\*4
- Activation: Button Activated
- Preheat Mod: 1.8V (2 Clicks on the Button to Activate Preheat Mode)
- Battery Capacity: 300mAh ± 20mAh
- Output Voltage: 3.5V
- Charging Port: Type-C





# Acute POD

360° visible tank

## Smart Device

Customized Device Settings for the BEST Oil  
Performance with Device Counterfeit Authentication.

- KC-P40I/C05 (0.5ML) C10(1.0ML)
- Button Activated
- Rechargeable Battery
- Aluminum Alloy Housing and PCTG Tank
- Button Operation
- 5 clicks on the button to turn on/off the device.
- 2 clicks to activate 15s preheat mode.
- Short Circuit Protection
- Short circuit protection is triggered when the device is enabled. LED indicator stays on for 2 seconds.
- Over Current Protection
- The device trips and breaks the circuit when an over current is detected. LED indicator stays on for 2 seconds.
- Timeout Protection
- The device will stop working in case of exceeding 10 seconds and stop preheating when exceeding 15 seconds. LED indicator flashes 2
- Charging
- LED indicator flashes 10 times when the battery is too low, and there will be no response when the battery has completely run out.
- LED indicator fades in and out when charging and stays on when fully charged.



# SHARD

## AIO vape pen

### Smart Device

Customized Device Settings for the BEST Oil  
Performance with Device Counterfeit Authentication.

- Volume: 1.0ml 1.5ml 2.5ml
- Dimension: Ø 15.2x105.5mm/112.5mm/126.5mm
- Weight: 33g / 35g / 40g
- Resistance: 1.4Ω
- Heating Core Material: Ceramic
- Center Post: SUS316L
- Tank Material: PCTG
- Aperture Size: 1.6mm\*4 or 2.0mm\*4
- Battery Capacity: 00mAh
- Charging Port: Type-C
- Charging Voltage: 4.5-5.5v
- Activation: Inhale activated
- Battery Life: 100 times



# Canna

## 1.0ml AIO Pen Vape



### Smart Device

Customized Device Settings for the BEST Oil  
Performance with Device Counterfeit Authentication.

- Inhaled Activated
- Rechargeable Battery
- PC Housing and PCTG Tank
- Heating Core Technology

- Dimension: 96.3 x 20 x 11.8(mm)
- Tank Volume: 1.0ml
- Resistance: 1.2 ohm
- Aperture Size: 1.6mm
- Aperture Number: 4
- Battery Capacity: 300mAh
- Heating Core Material: Ceramic
- Tank Material: PCTG





# ZenVox

Dual Tank

Dual Flavored AIO

## Smart Device

Customized Device Settings for the BEST Oil  
Performance with Device Counterfeit Authentication.

- Button/Draw Activated
- Two Coils, Two Tanks
- Two Flavors & Blend Flavor
- Ceramic Heating Core
- Pure Flavor, Large Clouds
- High Cost-Performance
- Large Battery Capacity

- **Button Operation**

5 clicks on the button to turn on / off the device.

2 clicks to activate 15s preheat mode.

1 click to end preheat mode

- **Short Circuit Protection**

Short circuit protection is triggered when the device is enabled. LED indicator flashes 3 times.

- **Timeout Protection**

The device will stop working in case of exceeding 10 seconds. LED indicator flashes 2 times.

- **Out of Power**

LED indicator flashes 10 times when the battery is too low, and there will be no response when the battery has completely run out.



# CLARITY

SMART POST LESS

Designed for Viscosities Extractions

## Smart Device

Customized Device Settings for the BEST Oil  
Performance with Device Counterfeit Authentication.

- Central Post Free
- Cotton & Glue Free
- One Step to Seal
- Dual Airflow
- Anti Clogging
- Easy to Filling
- Easy One Step Capping
- Duo Channel Avoid Clogge
- No-Oil Waste: V shape
- Heavy Metal Free
- Battery Capacity: 280mAh
- Dimesnsion: 0.5ml: 18.5\*9.0\*95mm/ 1.0ml : 18.5\*9.0\*103.5mm
- Charging :Type-C
- Housing:Stainless Stell



# reKAST Lite

Smart AIO POD

KC-P18I/C05

## Smart Device

Customized Device Settings for the BEST Oil  
Performance with Device Counterfeit Authentication.

- Volume 0.5ml
- Resistance : 1.2-1.6ohm
- Battery Capacity: 140mAh
- Aperture Inlet : 4x  $\phi$ 0.9 / 1.2 / 1.6mm
- Tank Material: PCTG
- Center Post: SUS316L
- Preheat Mode Two Clicks to Activate

## Sleek Palm Size Design

Our latest pod system features the smallest, sleek palm design on the market for discretion and an elevated experience

## Pre-Heat Function

if on a chairlift or a cold day in Chicago, Our preheating function allows any oil viscosity to be primed and ready to enjoy your oil to its highest expectations. No clogging or dry hits with exceptional taste form start to finish





# reKAST

Smart AIO POD

KC-P19I/C10

## Smart Device

Customized Device Settings for the BEST Oil  
Performance with Device Counterfeit Authentication.

- Volume: 1.0ml
- Resistance: 1.2-1.6Ω
- Battery Capacity: 300mAh
- Aperture Size: 4 × Ø1.6mm
- Tank Type: PCTG
- Center Post: SUS316L
- Preheat Mode: 4 Taps to Activate
- Dimension: 23.4 × 13 × 96.4mm

## Sleek Palm Size Design

Our latest pod system features the smallest, sleek palm design on the market for discretion and an elevated experience

## Pre-Heat Function

if on a chairlift or a cold day in Chicago, Our preheating function allows any oil viscosity to be primed and ready to enjoy your oil to its highest expectations. No clogging or dry hits with exceptional taste form start to finish



# Smart Battery

510 BATTERY

## Smart Device

Customized Device Settings for the BEST Oil  
Performance with Device Counterfeit Authentication.

- Type-C Port
- Adjustable Output Power
- Blue: 5.0W; Yellow: 6.5W; Red: 8.0W.
- 5 clicks on the button to turn on/off the device / 2 clicks to activate 15s preheat mode and 1 click to stop preheating / 3 clicks to switch output power

## Timeout Protection

The device will stop working in case of exceeding 8 seconds. The screen will return to the main interface with battery level displayed.

## Short Circuit Protection

Short circuit protection is triggered when the device is enabled. The screen(the battery level, percentage icon (%), S icon, battery icon and the current power level indicator ) will flash 3 times.

## Overload Protection

Overload protection is triggered when the load resistance is not within the range of the adapted resistance during the output process. The screen(the battery level, percentage icon (%), S icon, battery icon and the current power level indicator ) will flash 3 times.

## Out of Power

When the battery is too low, the selected power level indicator will light up and the battery icon will flash 10 times. There will be no response when the battery has completely run out.

## Charging

During charging, the screen will display the battery level and the battery icon, and the battery icon will keep flashing. The battery icon will stay on when fully charged.



## KC-02-P

Full ceramic cart 4 oil holes

0.5ml/0.8ml/1.0ml/2.0ml Press-on

All Ceramic Cartridge with 510 Thread

Black Ceramic Core Atomizer

- Ceramic Core THC/CBD
- Resistance: 1.4ohm
- Dimensions 0.5ml:  $\phi 10.5 \times 69\text{mm}$ , Thread: 510
- Intake Aperture Size:
  - 0.5ml/1.0ml:  $1.2 \times 1.4 \times 4$  or  $2 \times 2.5\text{mm}$
  - 0.8ml:  $1.6\text{mm} \times 1.7\text{mm} \times 4$  or  $4 \times 2.0\text{mm}$
- Center Post: Ceramic
- Mouthpiece: Ceramic
- Capping Method: Press-on





## KCT12

### 0.5/1.0/2.0mL Ceramic Coil Cartridge



- Thread: 510
- THC/CBD Resistance: 1.4Ω
- Capacity & Dimensions:
  - 0.5mL:  $\phi 10.5 \times 54\text{mm}$
  - 1.0mL:  $\phi 10.5 \times 64\text{mm}$
  - 2.0mL:  $\phi 12.0 \times 68\text{mm}$
- Aperture Size: 4\*2.0mm
- Mouthpiece: Flat Ceramic
- Capping Method: Press-on



## KCT12-LF

0.5/1.0 ml Ceramic Coil

316 stainless steel

Flat tip /Round (optional)

Screw on/Press-on (optional)

- Size: D 10.5mm
- 64mm (1.0ml) 54mm (0.5ml)
- Capacity: 0.5/1.0 ml
- 3. Intake Aperture Size: 4\*2.0 mm
- 316 Stainless steel central post
- Ceramic cell heating coil
- 1.4 ohm





## KCT13-P

0.5/1.0 ml Ceramic Coil  
PCTG Tank

- THC/CBD Resistance: 1.4Ω
- Dimensions:  $\phi 10.5\text{mm}$ , Thread: 510
- Intake Aperture Size: 4\*2.0mm
- Mouth Piece: PCTG (food grade)
- Flat or Round tip optional
- Capping Method: Press-on Lock





## 1.0ml Cartridge

### KC-C15

- Ceramic Heating Core
- Ceramic Center Post
- Pure Flavor, Large Clouds
- Open-Top Tank Design
- High Cost-Performance





## Zirconia

### 0.5ml/1.0ml Zirconia Cartridge

- Ceramic Heating Core
- Full Zirconia Mouthpiece and Center Post
- Stronger than Metal or Alumina Ceramic
- Open-Top Tank Design
- Low Heat Transfer Coefficient





S L I K

## Atomizer AIO Box

- Volume: 2.0ml / 3.0ml
- Battery Capacity: 400mAh
- Dimension: 28\*15\*90mm
- Charging: Type-C
- Housing: Stainless Steel
- Heavy Metal Free
- Abundant vapor
- Central Post Free
- Cotton & Glue Free
- Easy One Step Capping
- Duo Channel Avoid Clogged
- Designed For Viscosities Extractions
- No-Oil Waste: V-Shape



# KCT22

## Screw-On/Press-On

- 2 holes for thick oil
- Size: 106mmx10.5mm
- Tank Capacity: 0.5ml/ 1.0ml
- Aperture Size:
- Intake Aperture Size: 2\*1.7
- Battery Capacity: 240mAh
- Ceramic coil
- Rechargeable



## KCT-22R 03ML Disposable

- 320 mAh
- 4 \* 2.0mm intake holes
- Ceramic Coil
- Borosilicate Glass Tank
- Round Tip
- Easy Press-On
- USB Type C
- Dual Airflow for anti-clogging
- Branding options



Tank  
0.3/ 0.5/ 1.0ml

USB Charging Port



KUSHCART





## KCT-17Z

### Zirconia AIO 0.5mL/1.0mL



- Capacity: 0.5mL/1mL
- Oil inlet hole: 1.8mm\*4
- Capping: Press on
- Size: 10.5\*128.8mm(Flat MP); 10.5\*118.8mm(Barrel MP)
- Resistance: 1.4ohm
- Coil heating wire: Ceramic coil with Nichrome wire
- Main material: Stainless steel + Zirconia + Ceramic + Glass
- Battery: 280mah rechargeable
- Voltage: 3.5v
- Charging port: Micro-USB/ Type-C
- Non-metal contacted with oil, No Coating & Glazing ceramic



## KCT-17 | KCT-17B

### All Ceramic 0.5mL/1.0mL

100% Cotton-free

Black Ceramic Core Atomizer



Micro USB Charger



2 Large Oval Shape Intake Holes,  
Leaking Proof Design,  
Perfect For Thick Oil.

- Ceramic Core AIO Pen
- CBD&THC Resistance ( $\Omega$ ) : 1.2
- Diameter:  $\phi 10.5\text{mm}$ ;
- Center post: Ceramic
- Intake Aperture Size:  $2*1.2*2.5\text{mm}$
- Mouthpieces: Ceramic Flat or Round tip
- Caping Method: Press-on
- Battery: 320mAh Rechargeable: Type-C
- KCT-17B with button





KCT17E | KCT-17EB

0.5mL/1.0mL

All Ceramic AIO

Black Ceramic Core Atomizer



Micro USB Charger



2 Large Oval Shape Intake Holes,  
Leaking Proof Design,  
Perfect For Thick Oil.

- Ceramic Core AIO Pen
- CBD&THC Resistance ( $\Omega$ ) : 1.2
- Diameter:  $\phi$ 10.5mm; Center post: Ceramic
- Aperture Size: 2\*1.2\*2.5mm
- Size: Flat tip (1ml/133mm) (0.5ml/123mm)
- Size: Round tip (1ml/106.5) (0.5ml/112mm)
- mouthpieces: Ceramic Flat or Round tip
- Caping Method: Press-on
- Battery: 280mAh
- Rechargeable: Type-C
- Preheat/Voltage adjustable button (optional)



## VAPPO LIGHTER BATTERY

KC-B510/V01  
KC-B510/V02

900mAh

- Capacity: 900mAh
- Size: 50\*49\*14mm
- Weight: 61.28g | 77.88g
- Output voltage: 2.6V, 3.2V, 4.0V
- Preheating output: 1.8V
- Preheating time: 155ms
- Puff: 500-700 puffs
- Haptic Feedback (Optional)





## Base Camp Battery KCTB510 series

Cartridge Batteries

350mAh

650mAh

900mAh

1100mAh

Rechargeable

Type-c charging port



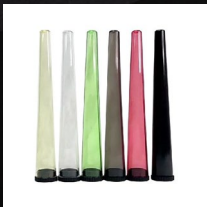




## Accessories

CBD/THC Oil Filling  
Glass Syringe with  
Lure cap / Lure lock





## Packaging Solutions

---

# Pop Top Tubes

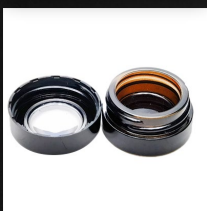


## Packaging Solutions

# CR Mylar Bags

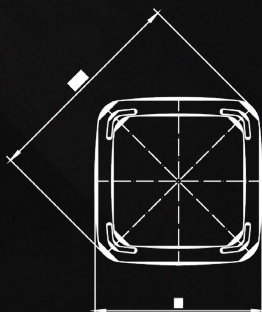
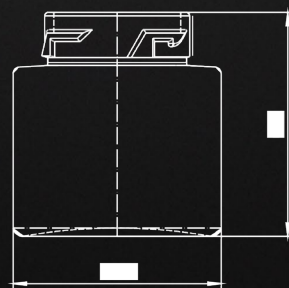
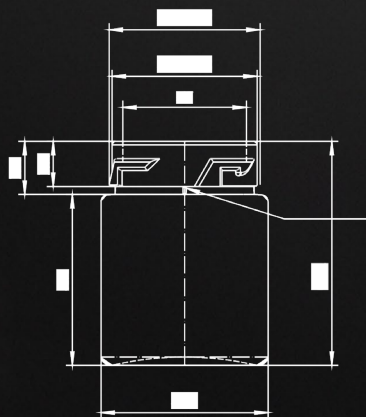






## Packaging Solutions

# Marijuana Concentrate Jars



# Stages of Product Development From OEM to ODM

## 1. Original Public Domain Design (OEM)

## 2. Kush Cart Engineered Improvements

- Improved pressure variance seal to address leaking failures by removing the metal plate and increasing the gasket seal surface area for seal redundancy.
- Increased post size to accommodate 4 \* 2.0mm apertures for improved airflow, oil flow, & oil atomization.
- Upgraded to a Type-C charger
- Resistance & voltage were adjusted for the best performance for distillate and live resin to retain terpenes and flavor from the first puff to the last.

## 3. Nova AIO 1 & 2ml (Smart Chip) - In-House Engineered Design (ODM)

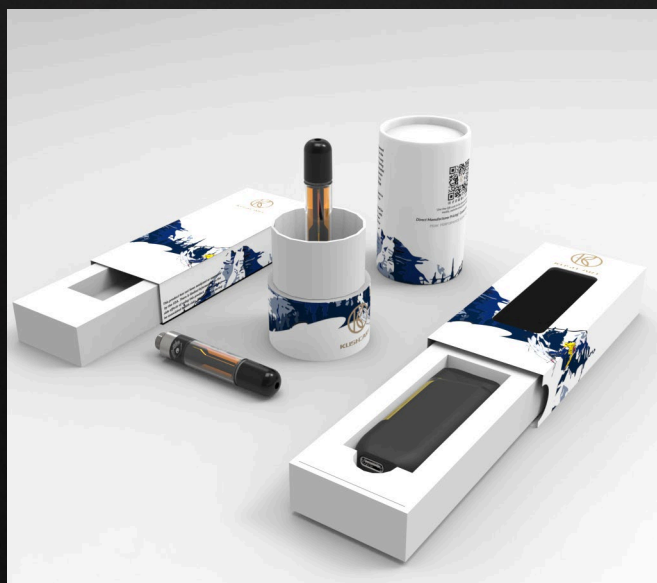
- Our customer had a market share decrease after being a leader due to their previous supplier's product failures with leaking and clogging. After improving the original design to the best outcome, we decided to create our own AIO with a similar form factor to address our client's needs and to best represent their brand's oil.



# PACKAGING DESIGN

Packaging design is the connection of form, structure, materials, color, imagery, typography, and regulatory information with ancillary design elements to make a product suitable for marketing.

Its primary objective is to create a vehicle that serves to contain, protect, transport, dispense, store, identify, and distinguish a product in the marketplace. Ultimately, the goal of a packaging design is to meet marketing objectives by distinctively communicating a consumer product's personality or function and generating a sale.







# Thank You !

**Providing superior quality and strict management with  
CBD/THC Cartridges & Vapes Devices**

Denver Office:  
99 Inverness Dr E #180 Englewood,  
Co80112-5122 USA

 | (720) 303-6806660

 [sales@thekushcart.com](mailto:sales@thekushcart.com)

 [thekushcart.com](http://thekushcart.com)

